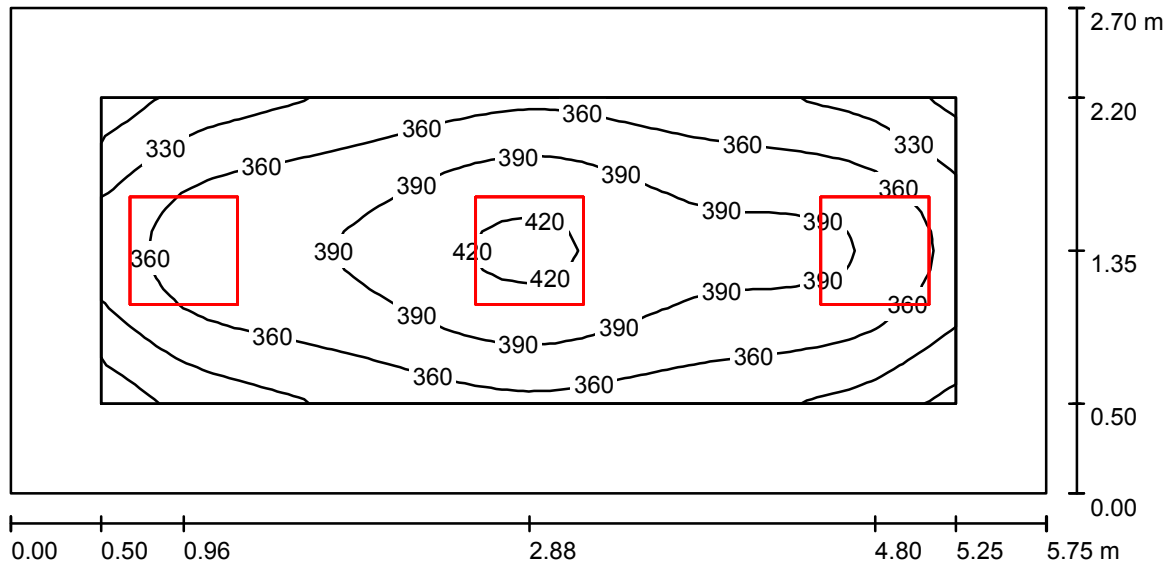


Operator  
Telephone  
Fax  
e-Mail

## кабинет 1.19, 1.16, 2.18, 2.15, 3.16 / Summary



Height of Room: 3.000 m, Mounting Height: 3.000 m, Maintenance factor: 0.90

Values in Lux, Scale 1:42

Surface	$\rho$ [%]	$E_{av}$ [lx]	$E_{min}$ [lx]	$E_{max}$ [lx]	$u_0$
Workplane	/	368	283	428	0.769
Floor	20	253	167	313	0.660
Ceiling	70	81	55	114	0.676
Walls (4)	50	184	65	397	/

### Workplane:

Height: 0.800 m  
Grid: 32 x 16 Points  
Boundary Zone: 0.500 m

Illuminance Quotient (according to LG7): Walls / Working Plane: 0.532, Ceiling / Working Plane: 0.220.  
Proportion of points with less than 400 lx (for IEQ-7): 87.11%.

### Luminaire Parts List

No.	Pieces	Designation (Correction Factor)	$\Phi$ (Luminaire) [lm]	$\Phi$ (Lamps) [lm]	P [W]
1	3	OCTA-LIGHT PLC OCTL-OLS-30-RNWR (1.000)	3040	3100	28.0
Total:			9120	9300	84.0

Specific connected load:  $5.41 \text{ W/m}^2 = 1.47 \text{ W/m}^2/100 \text{ lx}$  (Ground area:  $15.53 \text{ m}^2$ )